

page 2
Programs
Winter Meeting
Upcoming Events & Schedule

page 3
Chapter Technology Transfer Committee
Technical Activities
Golf Tournament Success

page 4
Young Engineers in ASHRAE
Student Activities

page 5
Honors and Awards
Past Presidents

page 6
Chapter Leadership
UCF Initiative

NOVEMBER 2009



The Dewpoint

THEME: STUDENT ACTIVITIES AND UCF INITIATIVE MONTH

PRESIDENT'S MESSAGE

Rich King, PE

Another busy month for the Central Florida Chapter! We had our fall golf tournament and Orange County Mayor Richard Crotty for the October meeting. We were fortunate this year, as last year's tournament had rain. Photos are up!!! Visit <http://ashrae-cfl.org/events/fall-golf-tournament/>



Outside of our chapter meeting and golf tournament, we as a chapter have made great strides in our local partnerships. On September 17, Jason and I met with Diane Sitzer and Allyson Peters the local chapter President for BOMA Orlando and Executive Director for BOMA Orlando. There may be some of you that ask what is BOMA? Well, BOMA is the Building Owners and Managers Association, and they are primarily concerned with all aspects of commercial office buildings. Including but not limited to building management, energy consumption, local and national building codes to name a few.



BOMA Meeting (L to R): Rich King, Allyson Peters, Diane Sitzer, Jason Alphonso, Victor Goldschmidt

Jason and I also met with Larry Simmons and Alexa Stone the local IFMA President and IFMA board member. IFMA is the International Facility Management Association, and they certify facility managers, conduct research, provide educational programs, and recognize facility management certificate programs.

ASHRAE at a society level has signed a memorandum of understanding between each of these associations in order to better share resources and collaborate on projects, publications, sustainability research and educational offerings that will be beneficial to both organizations' members and constituents. In an effort to bridge the local ASHRAE, BOMA and IFMA chapters, we will be bringing these international agreements down to a local level to better serve our organizations and members.

In addition to all of this, our chapter has become a founding member of the Central Florida Energy Efficiency Alliance (CFEEA). For more information on CFEEA, please visit <http://www.orangecountyfl.net/cms/DEPT/CESrvcs/epd/CFEEA/default.htm>

Way to go Central Florida, you are paving the way for energy efficient buildings for years to come!

November 2009
Volume 13, Issue 3

*A monthly publication of the
Central Florida Chapter
of the American Society of Heating, Refrigeration, and Air Conditioning Engineers, Inc.*

www.ashrae-cfl.org

ASHRAE Society Website: www.ashrae.org



IFMA Meeting (L to R): Jason Alphonso, Larry Simmons, Rich King, Alexa Stone

Programs

Chair:
Jason Alphonso, PE



ASHRAE CFL Past President, Bernie Horne described it as one of the best dinner meetings ever in the history of the chapter. October 8, 2009 was a truly a historical meeting for ASHRAE Central Florida.

Orange County Mayor, Richard Crotty was the keynote speaker and delivered Orange County's commitment to green in his address "Orange to Green". Our esteemed guests that evening include:

Richard Crotty, Orange County Mayor and our Main Speaker for the evening

James A. Peck, BOMA International Chair and Chief Elected Officer

Henry H. Chamberlain, BOMA International President and Chief Operating Officer

Richard D. Purtell, BOMA Former Chair, 2008-2009

Ross Montgomery, Director and Regional Chairman, ASHRAE Region 12

Presidents, Past-Presidents, Executive Director and Board of Governors Representatives of the Orlando Chapters of ASHRAE, BOMA, IFMA & USGBC

Alexa Stone - Co-Speaker and Representative of Central Florida Energy Efficiency Alliance (CFEEA)

Lori Cunniff, Manager Environmental Protection Agency (EPA), Orange County

ASHRAE Fellow Paul Halyard, PE did a great YEA Topic on "Brief History of Air Conditioning in Orange County". The young engineers and students were listening with rapt attention as Orlando's HVAC history came alive.

The October meeting was a perfect example how your ASHRAE chapter is making a special effort to reach out to our sister organizations. Irrespective of our views of global warming, one thing is for sure the sustainable and green movement has created a sense of "common purpose" among a truly diverse group of professional organizations. No one group can address the issues at hand single handedly.

We look forward to another great joint meeting in November. We are teaming up with the building engineers of BOMA and IFMA. Another group of ASHRAE members who will truly benefit from this meeting is our mechanical service contractors. We will be offering free PDH's at this meeting.

An ASHRAE distinguished lecturer, a great topic, **FREE PDH's** and the usual camaraderie, networking and good ole' fun - Talk about a true bang for your buck!

ASHRAE Winter Meeting—Orlando 2010

As many of you know, the 2010 ASHRAE Winter Meeting is coming to Orlando January 22nd - 26th! Information about the meeting can be found on ASHRAE's website at www.ashrae.org. If you have any questions, or want to volunteer to help with the meeting, please contact:

Host Committee Chairman: Bill Dillard bdillard@msifla.com

Host Committee Co-Chairman: Wade Conlan wconlan@x-nth.com

For a full list of Host Committee members and more information on the upcoming event, please visit the Central Florida ASHRAE Website, www.ashrae-cfl.org/events/2010-winter-meeting/.

Have you seen our updates on Facebook? Become a fan of ASHRAE on Facebook (www.facebook.com/pages/ASHRAE/106136469528?v=info) and keep an eye out for updates on the Winter Meeting from your local Host Committee!

Upcoming Events

Orange County Teach-In
November 18, 2009
Frangus Elementary School

**Standard 180, A New Approach to
HVAC System Maintenance**
November 19, 2009

Robert G. Baker
Joint Meeting with BOMA/IFMA

**Overview of ANSI/ASHRAE/IESNA
Standard 90.1**

December 10, 2009
Lawrence G. Spielvogel, P.E.
Joint Meeting with FES

**ICRA (Infection Control Risk Assess-
ment) 101: Understanding the Basics of
Liability and Risk During Healthcare
Construction**

January 14, 2010
Marlene Linders
Joint Meeting with ASHE

**Sustaining Our Future by
Rebuilding Our Past**

February 9, 2010
Gordon Holness, P.E.,
Society President
Joint Meeting with BOMA/IFMA

Central Florida Shrimp Boil
March 25, 2010
Winter Park Farmer's Market

Master Format 2004
April 8, 2010

Charles E. Gulledge, III, P.E.
Joint Meeting with SWE/ASME

Spring Golf Tournament
April 2010
Sanctuary Ridge Golf Course

**Ice Fog and Psychrometrics: The Miss-
ing Link in Industrial Freezer Design**

May 13, 2010
S.A. Sherif, PhD
Joint Meeting with AEE



CTTC Success



Chair:
John Davant

We continue to do an outstanding job in our monthly Dewpoint publications. Thanks to John Fabian and Cameron Sherwood for your efforts. Be sure you caught John's comments regarding the new LEED v3 requirements utilizing ASHRAE 90.1-2007. As John suggests, although this publication has been out for a couple of years many engineers have used the 2004 version due to

previous requirements. Cameron offered some advice on the use of DX systems and keeping the saturated suction temperature (SST) above 41 degrees. Be sure to catch up on these previous articles in the October Dewpoint if you missed them.

On April 21, 2010 there will be a Webcast "Right from the start - Commissioning for High Performance Buildings". This webcast is intended to provide the engineering community with the necessary tools to overcome commissioning hurdles and make the commissioning process easier. Be sure to mark your calendars 4/21/2010 1:00 - 4:00 pm for this free Webcast. More information will follow as we get closer to the date.

If you missed October's meeting you missed a very big turnout with Mayor Richard Crotty as guest speaker, BOMA, and the Central Florida Energy Alliance. Mayor Crotty gave us an overview of the sustainable efforts being made in Orange County and the use of solar systems. Be sure and join us for the November meeting as Robert G. Baker will discuss ASHRAE Standard 180 "A new approach to HVAC maintenance". Please be sure to fill out the speaker survey form at the end of each meeting. This is important to the chapter so that we may get your feedback on how we are doing and what we are missing.

Technical Activities

Co-Chair:
John Fabian



Load Programs and Inputs

Commercial Load Programs are very helpful tools when it comes to calculating cooling and heating loads for a building but some people use their other functions to help them, for example, size equipment or determine airflows. I've seen a few common errors when using these load programs for more than just the basic cooling and heating load calculations. Therefore the best thing to do is to step back and verify what goes in, and equally importantly, what comes out.

The first common error I typically see is in the selection of the return air path. Typical return air path options include ducted or plenum and each of these affect the system in a different way. When using the program to size airflows it is important to ensure this is selected correctly. For example, in a plenum return system, some of the building load shifts to the return air and increases its temperature. This will allow the reduction of supply air because of the reduced space loads as there is less heat to transfer from the plenum to the space. Each load program has different default settings for the return air path so it is important to ensure the proper input.

The second usually overlooked item is fan static pressure. When using load programs for equipment sizing, neglecting this may take away from your safety factor increasing the possibility of issues. We can see from the ASHRAE Systems and Equipment Handbook that the temperature rise is a function of differential pressure. Therefore the total heat gain will also depend on your airflow rate.

Load programs are tools which, when used correctly, can make a lot of tasks easier for us to complete. It is important however to look at the beginning and the end results using rules of thumb to make sure the results makes sense.

For more information, refer to the ASHRAE Handbook - HVAC Systems and Equipment.

Golf Tournament Success

Thank you Central Florida ASHRAE for participating in such a successful Fall Golf Tournament! With your help, we were able to raise \$9,800 for Research Promotion! Pictures of this great event are available for viewing on our website at: ashrae-cfl.org/events/fall-golf-tournament/.

Congratulations to the following golfers:

1st Place:
Tom Tumarelli
Russ Escamillia
Hector Perez
Tom Tumarelli, Jr



2nd Place:
Todd Tice
Brian Mirus
Chris Kearney
David McCallum



3rd Place:
Don Bailey
Mike Ryan
Dave Peterson



Longest Drive: Don Bailey

Putting Contest: Robert Stanton

Closest to the Pin: Dino Treantos

We look forward to seeing you all again in April for our Spring Golf Tournament. Information will be available soon on our website and in this newsletter.

Young Engineers in ASHRAE

Chair:
Leo Rocha



October was a great month for Central Florida ASHRAE and its YEA members. During this month, ASHRAE held the YEA Leadership Weekend (YLW) in Atlanta where YEA members from around the world had the opportunity to gather and focus on leadership, networking, and professional development. Central Florida ASHRAE was proud and honored to send one of our current board members to this event. I had the opportunity to catch up with our Central Florida ASHRAE representative and get the insight regarding his experience.

Richard King, P.E. is a Principal and Project Manager for Peninsula Engineering, Inc. He is a Florida native that started college at the University of Florida and transferred to Auburn University. After receiving his B.S. degree in Mechanical Engineering, Machine Design Track, he returned to Florida to work in the HVAC Industry. He was nominated to attend YEA Leadership Weekend by Jason Alphonso, our Programs Chair and President-Elect.

Q: What encouraged you to attend YLW?

A: The reasons why I decided to attend YLW were because I wanted to get a better perspective on leadership; I was also the remaining member from the board who had not participated in YLW. Megan, Jason, John, you and I are now YEA graduates.

Q: How was the experience?

A: The most entertaining activity was attending the Atlanta Braves baseball game on Friday night. The most beneficial activity was the "What color are you?" group activity. This activity was very interesting; it taught me about different personality types and leadership styles.

Q: So what color are you?

A: I'm gold, which has nothing to do with the fact that I'm a King, nor do I have any gold. It pertains to my leadership style.

Q: How has YLW impacted your role in our chapter?

A: I want to forge great leadership skills on those who will follow me in succession as President of this Chapter and I want for all of us to achieve another Best Chapter Award in Region XII!

Q: Any advice for future YLW attendees?

A: Be prepared to get to know yourself in a different perspective. It is an awesome experience and you get to meet many wonderful young leaders from around the world.

For information regarding the next YEA Leadership Weekend, please contact Ashley Pruett apruett@ashrae.org

Student Activities

Chair:
Anik Patel



Co-Chair:
Kellie Watson



Our students have been working hard and looking good in their new ASHRAE polos. (To purchase: <http://ashrae-cfl.org/committees/student-activities/>) Here's a recap on what's been going on.

Kyle Davis from Harper Limbach spoke to the ASHRAE at UCF student chapter during their October general meeting on Thursday Oct 22nd. Kyle, a UCF alumni, spoke on a variety of issues ranging from current job market conditions to changes and innovations in the mechanical contracting/engineering profession.

Our three ASHRAE Student Competition Design teams at UCF have been learning a lot about our industry past month. They've had **4 two and half hour long tutorials** on topics ranging from the load calcs to zoning to energy calcs. Special thanks to the following people and firms for their time and contributions:

Megan Tosh	Stan Weaver & Company
Rich King	Peninsula Engineering
John Miller	Peninsula Engineering
Kellie Watson	PBS&J

Students Activities thanks everyone in Central Florida who supports ASHRAE at UCF and Senior Design teams by donating their time, money and advice! Please continue to check the website for more events and updates.



Honors and Awards

Chair:
Firouz Keikavousi



Engineering Week is approaching fast and our chapter members have a lot of accomplishments that are worthy of acknowledgement. We have a lots of talent in our engineering society; please enter in this competition and let's get credit for what you have done! Basic information is below and I would be happy to forward to you all the details upon request.

The Engineers Week Committee plans to make awards in eight categories this year. The categories for the 2010 Engineers' Week Awards are:

1. Lifetime Achievement in Engineering Award
2. Leadership Excellence
3. Technical Excellence
4. Young Engineer of the Year
5. Outstanding Organization of the Year - Public Sector
6. Outstanding Small Organization of the Year - Private Sector (Less than or equal to 100 Employees)
7. Outstanding Large Organization of the Year - Private Sector (More than 100 Employees)
8. Outstanding Engineering Project of the Year

Each nomination will be accomplished by submitting a completed form for one or more of the eight categories. Each nomination package must contain a synopsis providing details that relate information on the nominating form to the criteria (available upon request), and must be no longer than 3 pages of text plus one cover page (total of 4 pages). NOTE: The Cover Page is OPTIONAL and may include the answers to questions 1-4 and any pictures or graphics desired. Please do not include responses to other questions on the cover page, as it is the intent to limit the amount of text that needs to be reviewed. Consider this a cover page of a proposal.

After the Awards Committee Chairperson collects all nominations, the process will continue as follows:

An initial check for incomplete information and violations of nomination rules will be performed.

The nominations will then be judged. The judging committee will consist of a representative cross section of the societies and engineering disciplines.

Each member of the judging committee will be permitted to make a subjective evaluation and cast his or her vote accordingly.

It should be noted that the committee is particularly interested in recognizing recent accomplishments.

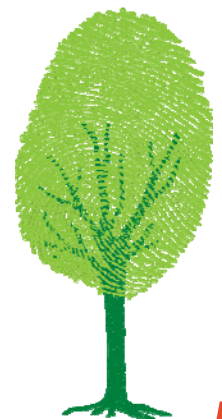
The deadline for accepting nominations is December 15, 2009.

If an insufficient number of nominations are made for a particular award category, the Committee may elect not to make the award. In this case, the nominating societies will be informed and the nominations returned.

If you have any questions, or would like more information, please contact me at firouzk@gmail.com.

Chapter Past Presidents

James A. Oberlin	1962-63
James A. Driver	1963-64
Warren L. Chase	1964-65
Kenneth E. Hayes	1965-66
Lloyd H. Boissoneault	1966-67
William C. Denson, PE	1967-68
Maynard D. Reese	1968-69
William R. Penn	1969-70
Theodore H. Brooks	1970-71
J. Wesley Floreth	1971-72
Wiley M. Cauthen	1972-73
Edwin C. Pratt	1973-74
Lyle M. Houser, Jr, PE	1974-75
Hal A. Head, PE	1975-76
Garth E. Tristam	1976-77
Raymond E. Davis	1977-78
W. Hugh Wilson, Jr	1978-79
William M. Dillard	1979-80
John D. Simmonds, PE	1980-81
Joseph K. McCarthy	1981-82
Dwayne Lorenze	1982-83
David Wassman, PE	1983-84
David Krause	1984-85
Bill Watford	1985-86
John J. Asendorf, PE	1986-87
Melvin Borczynski	1987-88
Jack Zelsman	1988-89
Kenneth L. Eiermann, PE	1989-90
Kevin K. McKenzie, PE	1990-91
Todd S. Morgan, PE	1991-92
Firouz Keikavousi	1992-93
John Elsea	1993-94
Bernard Horne	1994-95
Mark Lanier	1995-96
Larry Snyder	1996-97
Bill Leaton	1997-98
Hossein Dayi, PE	1998-99
Gary Carver, PE	1999-00
Michael Sheerin, PE	2000-01
Traci Just	2001-02
Chris Bradford	2002-03
Dan Cross, PE	2003-04
Damon Lynn, PE	2004-05
Todd Moore, PE	2005-06
Tim Citek	2006-07
Mike Dillard	2007-08
Wade Conlan, PE	2008-09
Rich King, PE	2009-



UCF Initiative

Chair:
Kyle Davis



We are full swing now with the Initiative and we have begun to coordinate new efforts with UCF and the College of Engineering. A few weeks ago, Rich King and I sat down with Bob Rich to catch up on what the University, especially the college of engineering, has been up to over the summer. As it turned out, much has been going on. We will discuss more in future Dewpoint articles but in this article I want to let you in on two really important developments.

One of the main objectives of the UCF Initiative has been to help develop curriculum that will teach students skills that are relevant and essential for the continued growth of our industry. Something new that may be on the horizon will accomplish that very thing. UCF has been on the forefront in sustainability in their new construction, renovations and physical plant operations. In cascading this down to the students, the University is exploring the possibility of creating a Master's Degree program(s) out of a new Institute of Renewable & Sustainable Energy. We will have the chance to help in the development of the program by participating in the advisory committee to create the Institute. This is some very exciting news and I can't wait to tell you all about future developments.

The other exciting bit of information is the appointment of Marwan A. Simaan, PhD, PE as the new Interim Dean to the College of Engineering & Computer Science. Prior to joining the University of Central Florida in 2008, he was the Bell of PA/Bell Atlantic Professor and former Chairman of Electrical Engineering at the University of Pittsburgh. He received the PhD degree in Electrical Engineering from the University of Illinois at Urbana-Champaign (UIUC). He is a member of the National Academy of Engineering (NAE), a Fellow of the Institute of Electrical and Electronics Engineers (IEEE), a Fellow of the American Society for Engineering Education (ASEE), a Fellow of the American Association for the Advancement of Science (AAAS), and a Fellow of the Electromagnetics Academy (EMA). He is also an Honorary Member of Phi Eta Sigma, the National Freshmen Honor Society.

As always, thanks for your continued support of the University of Central Florida. Great things are happening that will impact our local industry in magnificent ways. Stand by for more news in the coming months.



Chapter Leadership



President:	Richard King, PE (407) 246-1688 rking@peifla.com	UCF Initiative,	Kyle Davis (407) 321-8100 kyle.davis@harperlimbach.com
President Elect: Programs:	Jason Alphonso, PE (407) 857-3510 jalphonso@msifla.com	Historian:	Tim Citek (407) 671-3739 tcitek@cfl.rr.com
Vice President:	Leo Rocha (407) 671-3739 leo.rocha@aquaaairfl.com	Welcome Committee:	John Miller, PE (407) 246-1688 jmiller@peifla.com
Treasurer:	John Miller, PE (407) 246-1688 jmiller@peifla.com	Research Promotion:	John Miller, PE (407) 246-1688 jmiller@peifla.com
Secretary:	Megan Tosh (407) 581-6940 mtosh@stanweaver.com	CTTC:	John Davant (407) 212-1293 john.s.davant@jci.com
Past President: & Governor	Wade Conlan, PE (407) 660-0088 wconlan@x-nth.com	Calling Committee:	Amy Weaver, PE (407) 661-9100 amyw@c-p.com
Governor:	William (Bill) Dillard (407) 857-3510 bdillard@msifla.com	Honors & Awards:	Firouz Keikavousi (407) 405-3429 firouzk@gmail.com
Governor:	Mike Dillard (407) 857-3510 mdillard@msifla.com	Dewpoint Editor:	Megan Tosh (407) 581-6940 mtosh@stanweaver.com
Governor:	Michael Sheerin, PE (407) 841-9050 michael.sheerin@tlc-eng.com	Chapter Website:	Richard King, PE (407) 246-1688 rking@peifla.com
Governor:	Firouz Keikavousi (407) 405-3429 firouzk@gmail.com	Product Directory:	Tom Edwards (407) 581-6940 tedwards@stanweaver.com
Membership Promotion:	Amy Pastor (407) 660-0088 apastor@x-nth.com	Golf Chair:	Firouz Keikavousi (407) 303-1141 firouzk@gmail.com
Student Activities:	Anik Patel (407) 782-7495 anikppatel@gmail.com	Shrimp Boil Chair:	Dan Cross, PE (407) 701-2384 DACross@rimkus.com
YEA Activities:	Leo Rocha (407) 671-3739 leo.rocha@aquaaairfl.com	Refrigeration Chair:	Cameron Sherwood (407) 660-0088 csherwood@x-nth.com